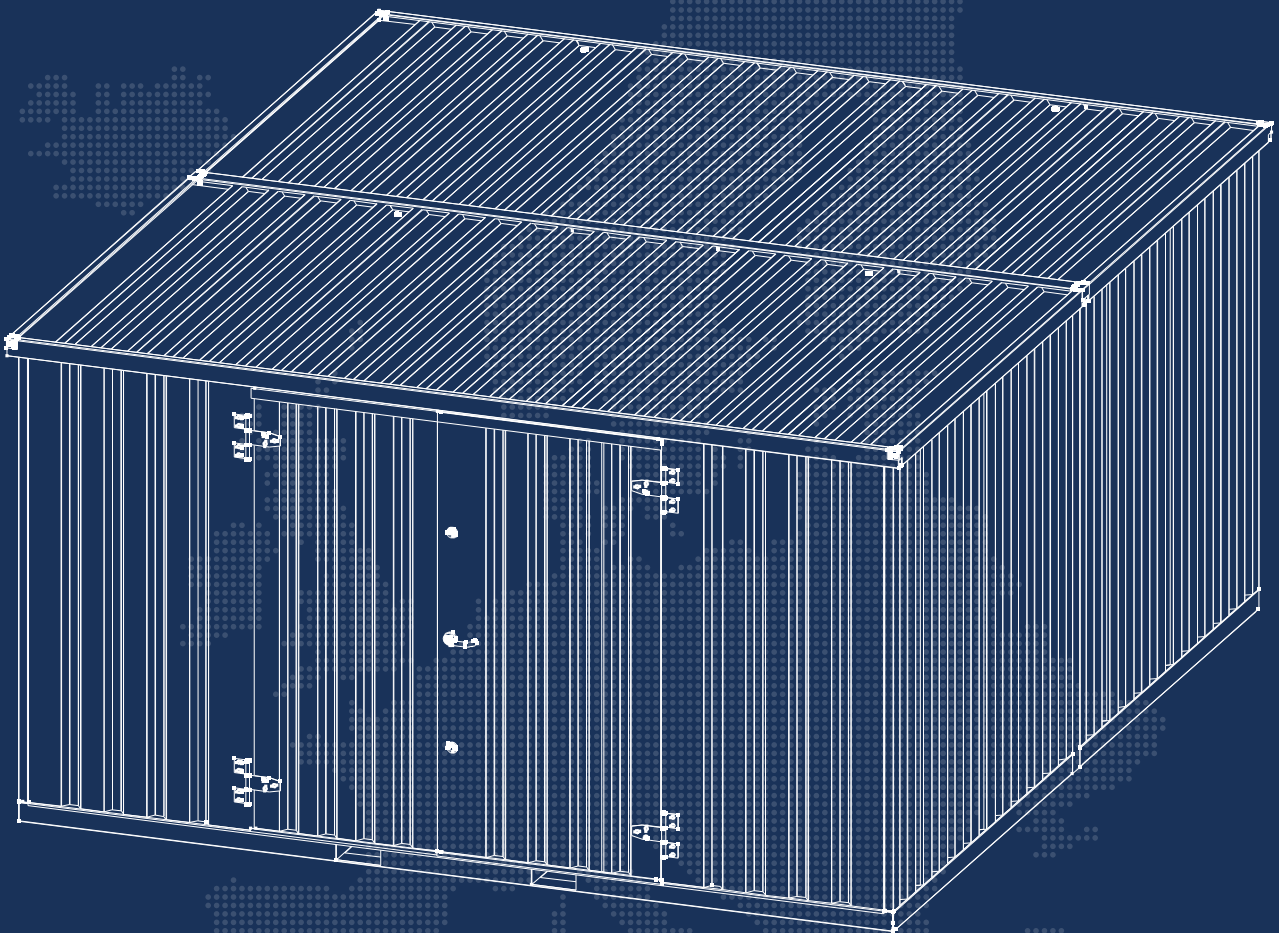




**FOCO**<sup>®</sup>  
CONTAINERS

# ASSEMBLY INSTRUCTIONS

## Linked container



# Equipment



- Screwdriver or drill (Phillips head)
- 13 mm wrench
- 19 mm wrench
- Torque wrench (13 mm and 19 mm inserts)
- Ladder

## Manual:



First, using the 19 mm and 13 mm wrenches, remove the screws that hold the floor and roof package together, save these screws. Also unscrew and save the lifting eyes on the roof.

Then remove the wooden blocks at the corners of the package and the iron blocks in the middle, these are not required for assembly, but may be useful in leveling the container.





Then the panels are removed from the package, do not place them on the asphalt this can cause damage in the form of dents or scratches. Protect the panels with leftover wood or plastic from the package. Always mount a container on a straight level surface.



Next, the panels are placed in the correct position (photo above). They are mounted using the 13 mm and 19 mm screws from the package with a corresponding washer in between (photos below). During assembly, the panels should be held by an extra person to keep them from falling to the floor. Once the panel is attached to the floor it can be released unless there is wind. The side panels (walls) are placed first, then the door is placed.





Then the two panels are mounted using a 13mm screw, a nut and two washers. The screw is fixed with the nut in the holes with a washer on both sides for protection.

Each corner of a container contains three fixing holes where a screw must be placed.



When coupling, first put the wooden boards between the floor boards



Insert the side fittings and screw them to the installed panels





The roof must be placed with (at least) two people, for larger models more people are required. As seen in the pictures above, the roof is slid onto the sliding rails at the top of the container. The roof is correctly placed when it falls into the slots. To check if the roof is positioned correctly, look from inside the container.



Then the roof is mounted using a 13 mm screw, and nut and two washers, as shown in the picture above.

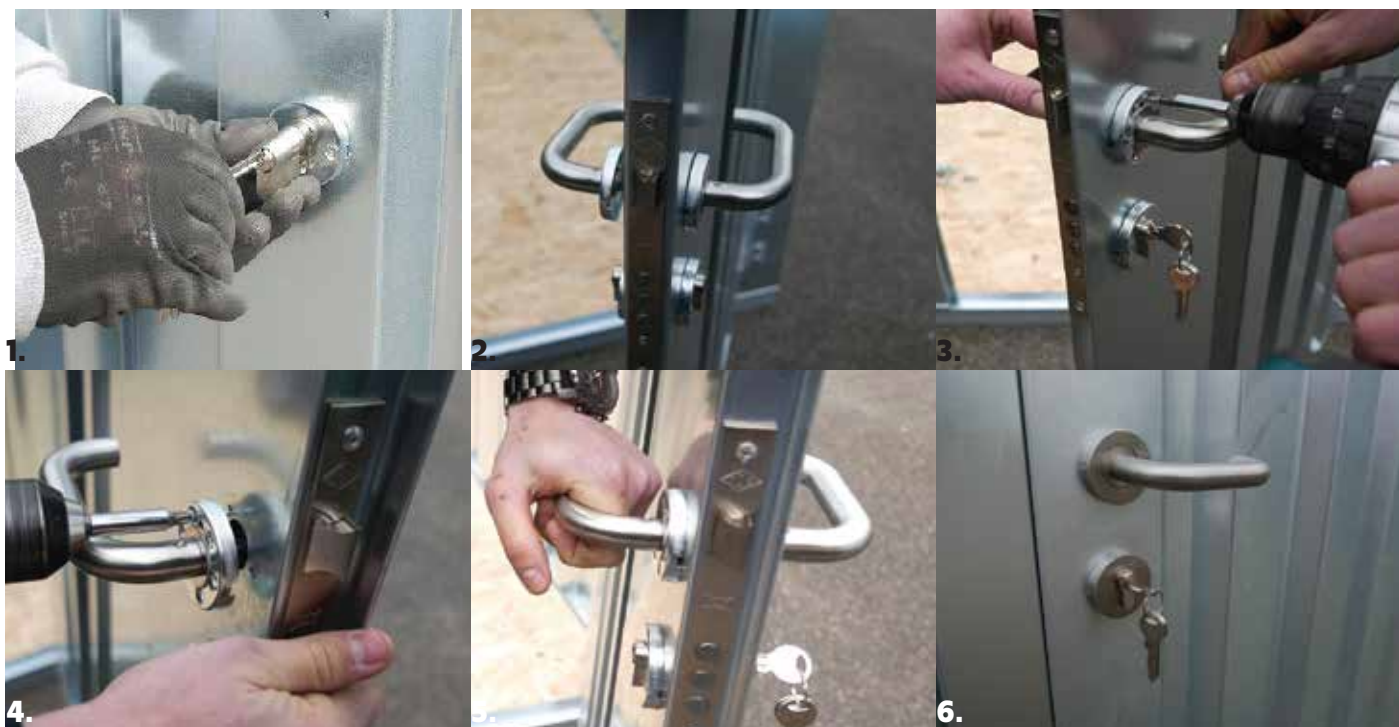


When the roof is in place, screw the roof connector to the underside of the roofs in the container.





To close the roof panels click the coupler over the holes.



Using the key, the cylinder lock is attached (photo 1). Then the door handle is attached (photo 2) and must be screwed on both sides using 3 screws (photo 3 + 4). Then the lock is fixed with the long screw on the side of the door (photo 5). Finally, the metal protection parts are placed on each latch and on each keyhole (photo 6).



Finally, the crane eyes are reattached to the roof of the container, no tools are required for this.





## Who we are

---

We are FOCO® Containers, we are a company specialized in solutions to storage problems. We have been working for about 10 years to provide everyone with the right container for his or her situation. We have grown into an international name and currently we are active in more than 15 countries throughout Europe.

Our aim is to expand this to the entire European continent. Our customer groups are very diverse because basically, every company that grows will eventually have storage problems. This is where we come in. We have delivered to major companies such as NS, Nutricia, De Technische Unie, De Lijn and many more.



 0031 85 0685 590

 [info@fococontainers.com](mailto:info@fococontainers.com)

 [www.fococontainers.com](http://www.fococontainers.com)

